

Accessories

Cylindrical Sensors

Exchanger Bracket

Exchanger brackets permit easy installation and removal of standard cylindrical shielded inductive sensors. Designed for situations where periodic sensor removal is required, the bracket's collet-style locknut secures the sensor in place, eliminating the need to readjust the sensor after reinstallation. The bracket also features a stop shoulder to maintain the sensing gap during sensor removal and installation.



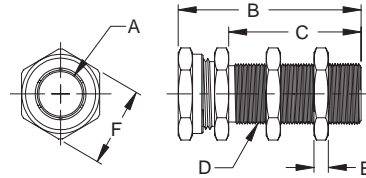
Ordering Information

Diameter of Sensor	Model Number
8mm	EXG-08
12mm	EXG-12
18mm	EXG-18
30mm	EXG-30

Dimensions (mm)

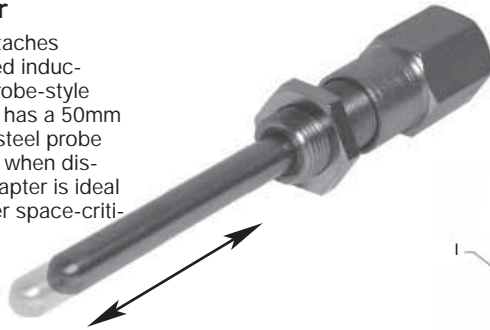
Model Number	A	B	C	D	E	F
EXG-08	8.10	32.0	18.0	M12 x 1	3.05	17.4
EXG-12	12.5	34.0	20.0	M16 x 1.5	3.30	22.2
EXG-18	18.5	38.0	20.0	M24 x 1.5	5.08	30.2
EXG-30	31.0	38.0	20.0	M36 x 1.5	5.84	41.3

Dimensions (mm)



Probe Tip Adapter

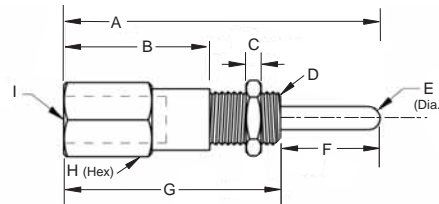
The probe tip adapter attaches to 8mm or 12mm shielded inductive sensor to create a probe-style limit switch. The adapter has a 50mm spring-loaded Stainless steel probe that activates the sensor when displaced. The probe tip adapter is ideal for in-die sensing or other space-critical applications.



Ordering Information

Diameter of Sensor	Model Number
8mm	PTA-08-50
12mm	PTA-12-50

Dimensions (mm)



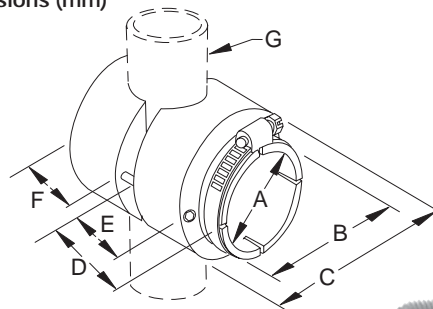
Dimensions (mm)

Model Number	A	B	C	D	E	F	G	H	I	Probe Travel
PTA-08-50	74.9	31.8	31.8	M8 x 1	3.18	25.4	49.5	11.1	M8 x 1 to depth of 20.0	For activation: 1.80 to 191 Maximum: 2.03
PTA-12-50	78.7	31.8	31.8	M12 x 1	4.75	25.4	53.9	15.8	M12 x 1 to depth of 18.0	For activation: 1.42 to 2.03 Maximum: 2.15

Sight Glass Mount

The sight glass mount allows a 30mm diameter capacitive sensor to be attached to a sight glass for level detection. The mount is made of plastic, includes Stainless steel fasteners, and accommodates 24.4mm to 44.5mm diameter plastic or glass tubes. This mounting method allows for easy sensor adjustment without disturbing the fluid inside the tank.

Dimensions (mm)



Model No.

SG30

Dimensions (mm)

Model No.	A	B	C	D	E	F	G - Tube O.D
SG30	30	36.8	69	67.8	31.7	19.1	25.4 - 44.5

